

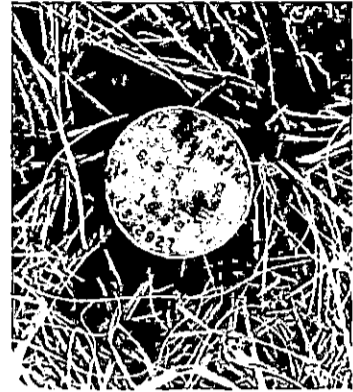
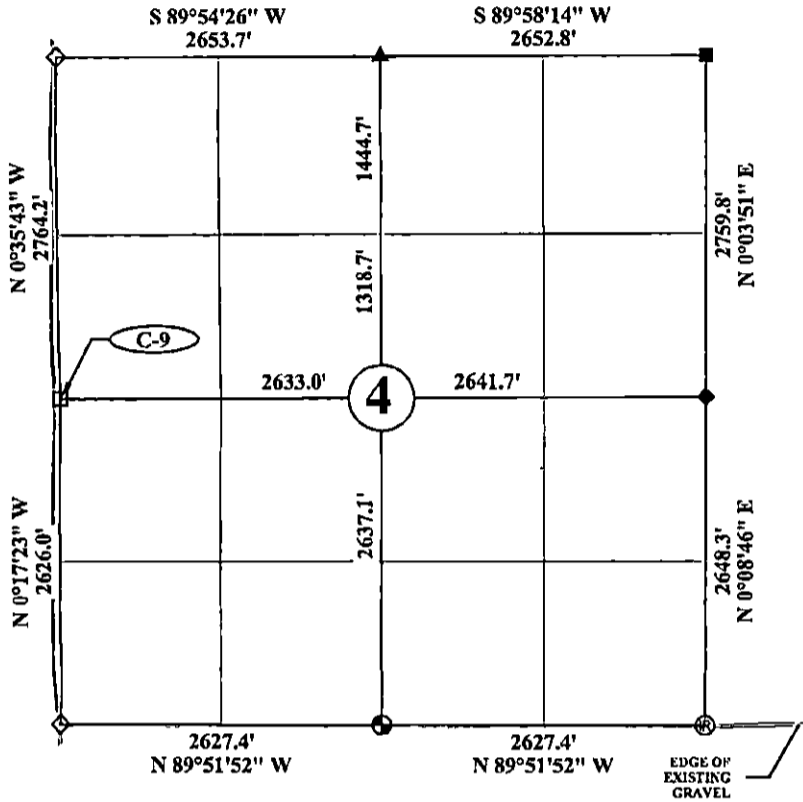
State of Wyoming Corner Record

(In compliance with the CORNER PERPETUATION AND FILING ACT, Wyoming Statutes, 2013, Section 33-29-901 through 33-29-910, and the Rules and Regulations of the Board of Professional Engineers and Professional Land Surveyors)

Reverse side of this form may be used if more space is needed.

Record of original survey and citation of source of historical information (if corner is lost or obliterated). Description of corner monumentation evidence found and/or monument and accessories established to perpetuate the location of this corner. Sketch of relative location of monument, accessories, and reference points with course and distance to adjacent corner(s) (if determined in this survey). Method and rationale for re-establishment of lost or obliterated corner.

T 15 N, R 67 W

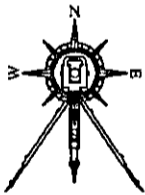


FOUND: 1993 ALUMINUM CAP, PLS 2927



LOOKING SOUTH

BASIS OF BEARING
GPS GRID BEARINGS
GROUND DISTANCES



NOT TO SCALE

LEGEND

- = (FOUND) 2001 ALUMINUM CAP, PLS 2500
- ◇ = (FOUND) ALUMINUM CAP, PLS 5910
- ◆ = (FOUND) 1993 ALUMINUM CAP, PLS 2927
- ▲ = (FOUND) 2001 ALUMINUM CAP, PLS 5910
- = (FOUND) 1993 ALUMINUM CAP, PLS 2927
- ⊕ = (FOUND) REBAR
- ⊙ = (SE1) 2022 ALUMINUM CAP, PLS 9328
- ⊗ = (SET) 2022 DOUBLE HEAD NAIL WITH BRASS TAG, PLS 18548

ALL COURSES ARE MEASURED UNLESS NOTED

Date of Field Work: 05/16/2022

Office Reference: 22-073ACR.DWG

CROSS INDEX PLAT

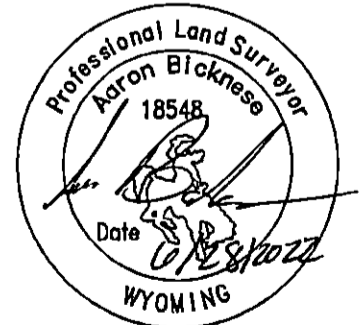
1	2	3	4	5	6	7	8	9	10	11	12	13	14	15	16	17	18	19	20	21	22	23	24	25
A																								
B																								
C			6	5	●	4	3	2	1															
D																								
E																								
F																								
G			7	8	9	10	11	12																
H																								
J																								
K																								
L			18	17	16	15	14	13																
M																								
N																								
O																								
P			19	20	21	22	23	24																
Q																								
R																								
S																								
T			30	29	28	27	26	25																
U																								
V																								
W																								
X			31	32	33	34	35	36																
Y																								
Z																								

Firm/Agency, Address

LAND SURVEYING INCORPORATED
209 NORTH WORKS AVE.
GILLETTE, WY 82716
Telephone Number: 307-682-1661

This corner record was prepared by me or under my direction and supervision.

SEAL & SIGNATURE



STATE OF WYOMING
Office of Clerk and Recorder
County of Laramie

This "corner record" was filed at _____ on the _____ day of _____, 20____ and was noted on the cross-index plat.



RECP #: 841502

RECORDED 7/25/2022 AT 3:57 PM BK# 2797 PG# 770
Debra K. Lee, CLERK OF LARAMIE COUNTY, WY PAGE 1 OF 1

County Clerk Deputy

Corner Name: WEST 1/4 Sections: 4 Township 15 North Range 67 West 6th P.M. County Laramie Cross-Index No.: C-9

WBRPEPLS/PLSW: March 1994; PLSW January 1998, January 2019